

# TENDER BULLETIN

NO. 23/2016/17 FY

09 September 2016



# LIMPOPO

**PROVINCIAL GOVERNMENT**  
REPUBLIC OF SOUTH AFRICA

This document is also available on the internet on the following website:

[www.limtreasury.gov.za](http://www.limtreasury.gov.za)

**Provincial Supply Chain Management Office**

## TABLE OF CONTENTS

	<b>Page No.</b>
1. REPORTING FRAUDULENT AND CORRUPT ACTIVITIES.....	03
2. INSTRUCTIONS.....	.04
3. BID INVITATIONS FOR SUPPLIES, SERVICES AND DISPOSALS .....	.05 -06
5. SPECIAL NOTICES.....	.07-18
ANNEXURE 1: ADDRESS LIST AND CONTACT DETAILS: PROVINCIAL DEPARTMENTS.....	19
ANNEXURE 2: ADDRESS LIST AND CONTACT DETAILS: PUBLIC ENTITIES.....	20
ANNEXURE 3: ADDRESS LIST AND CONTACT DETAILS: PROVINCIAL TREASURY TENDER ADVICE CENTRES .....	21
ANNEXURE 4: ADDRESS LIST AND CONTACT DETAILS: SATELLITE OFFICES .....	22

**REPORT**

**FRAUDULENT & CORRUPT ACTIVITIES ON GOVERNMENT PROCUREMENT SYSTEM**

---

**National Anti-Corruption @ 0800 701 701**

**Security and Investigating Services – Limpopo Provincial Treasury**

**@ 015 298 7196**

---

**ALL COMPLAINTS/CONCERNS RELATED TO SCM NON-COMPLIANCE MUST BE REPORTED TO:**

**LIMPOPO PROVINCIAL TREASURY**

**PRIVATE BAG X 9486**

**POLOKWANE**

**0700**

**PROVINCIAL TREASURY, FINANCE HOUSE**

**56 – 58 PAUL KRUGER STREET**

**POLOKWANE**

## 2. INSTRUCTIONS

1. Bidders are advised to read the entire tender bulletin.
2. Tenders for procurement of supplies, services and disposals are categorized as follows:

### **SUPPLIES**

- Accommodation, leasing of
- Audio visual equipment
- Building material
- Chemicals: Agricultural/Forestry/  
Laboratory/Water Care
- Clothing/Textiles
- Computer equipment
- Computer software
- Electrical equipment
- Electronic equipment
- Furniture
- General
- Medical
- Office equipment: Labour-saving devices
- Perishable provisions
- Stationary/printing
- Steel
- Timber
- Vehicle (all types)
- Workshop equipment

### **SERVICES**

- Building
- Civil
- Electrical
- Functional (including cleaning-,  
and security services)
- General
- Maintenance of electrical, mechanical  
equipment and plumbing
- Mechanical
- Professional
- Repair and maintenance of vehicles
- Transport

### **DISPOSALS**

- Clothing and textiles
- Furniture
- General
- Scrap metal
- Vehicles

3. Bid documents are generally available in English only.
4. The address where a bid document is available from and where it must be submitted to may differ.
5. The addresses at which bid documents may be obtained and to which tenders must be posted, appear in Annexure 1.
6. The address list of various Supply Chain Management Tender Advice Centers at which bid documents and tender bulletins may also be obtained, appear in Annexure 3; and
7. The address list of Supply Chain Management satellite offices at which tender bulletins may also be obtained, appear in Annexure 4

**3. BID INVITATIONS FOR SUPPLIES, SERVICES AND DISPOSALS**

BID NO.	DESCRIPTION OF SERVICE OR SUPPLIES	CONTACT DETAILS	BID DOCUMENT PRICE (NON-REFUNDABLE)	DUE AT 11H00	BID DOCUMENTS OBTAINABLE FROM	POST OR DELIVER BIDS TO
					See Annexure 1 & 2 Page 19- 20	
LGB02/2016/17	Physical security services for Limpopo Gambling Board  <b>Compulsory briefing session:</b>  <b>Venue:</b> 8 Hans van Rensburg Street Polokwane <b>Date:</b> 15/09/2016 <b>Time:</b> 11H00  <b>Limpopo Gambling Board</b>	<b>ADMINISTRATION PROCESS</b> Mr. C Mdluli  Tel No:@ 015 230 2314  Email @ Charles@lgb.co.za	R80-00	10/10/2016	114	114
EDET 205/16	Supervision and construction of the Holding Facilities for confiscated and captured wild animals (both dangerous non-dangerous)  <b>Compulsory briefing session:</b>  <b>Venue:</b> Langjan Nature Reserve <b>Date:</b> 07/10/2016 <b>Time:</b> 10H30  <b>Economic Development</b>	<b>ADMINISTRATION PROCESS</b> Mr. FF Ramoraswi @  015 293 8759 or  Ms.Linda Mothusi  @ 015 2938766  <b>TECHNICAL ASPECTS</b>  Mrs. L Kobe @ 015 293 8501/2	R170-00	17/10/2016	109	109
DSACO1/909/160B	Appraise, arrangement and description, create or update finding aid and load documents from Giyani, Makwarela and Lebowakgomo archives Respositories, offloading and filing at Provincial archives and provisioning of reliable transport. Provision of acid free archival filing boxes	<b>ADMINISTRATION PROCESS</b> Mabasa Lawrence @ (015) 284 4093, Modiba Victoria @ (015) 284 4108 and or Pilusa Martin at 015 284 4066	R80-00	30/09/2016	108	108

	<p><b>Compulsory briefing session:</b></p> <p><b>Venue:</b> 1337 Potgieter Street (i.e. Corner Rissik &amp; Potgieter Street) Polokwane in the Limpopo Province  <b>Date:</b> 16/09/2016  <b>Time:</b> 10H00</p> <p><b>Sports, arts and culture</b></p>	<p><b>TECHNICAL ASPECTS</b>  Mr. Nkatingi H. Javu @ 015 284 4104/ 083287 9507</p>				
DSACO2/909/160B	<p>Invitation of qualified and experienced company/bidders are needed for the maintenance and repair of CCTV System at Provincial Archives - PolokwaneLimpopo Provincial Government</p> <p><b>Compulsory briefing session:</b></p> <p><b>Venue</b>1337 Potgieter Street (i.e. Corner Rissik &amp; Potgieter Street) Polokwane in the Limpopo Province  <b>Date:</b> 16/09/2016  <b>Time:</b> 10H00</p> <p><b>Sports, arts and culture</b></p>	<p><b>ADMINISTRATION PROCESS</b>  Mabasa Lawrence @ (015) 284 4093, Modiba Victoria @ (015) 284 4108 and or Pilusa Martin at 015 284 4066</p> <p><b>TECHNICAL ASPECTS</b>  Mr. Nkatingi H. Javu @ 015 284 4104/ 083287 9507</p>	R80-00	30/09/2016	108	108
DSACO3/909/160B	<p>Installation of fire dampers in five (5) strongrooms and servicing of fire suppression system</p> <p><b>Compulsory briefing session:</b></p> <p><b>Venue</b>1337 Potgieter Street (i.e. Corner Rissik &amp; Potgieter Street) Polokwane in the Limpopo Province  <b>Date:</b> 16/09/2016  <b>Time:</b> 10H00</p> <p><b>Sports, arts and culture</b></p>	<p><b>ADMINISTRATION PROCESS</b>  Mabasa Lawrence @ (015) 284 4093, Modiba Victoria @ (015) 284 4108 and or Pilusa Martin at 015 284 4066</p> <p><b>TECHNICAL ASPECTS</b>  Mr. Nkatingi H. Javu @ 015 284 4104/ 083287 9507</p>	R80-00	30/09/2016	108	108

#### 4. SPECIAL NOTICES

##### 4.1. CORRECTION OF ADVERTISED BIDS

1. Kindly be informed that the number of security guards as advertised in the tender Bulletin of the 02<sup>nd</sup> September 2016 should read as follows:-

BID NO.	DESCRIPTION	NUMBER OF GUARDS REQUIRED
EDET 199/16	Physical security services at Senwabarwana Service Centre Capricorn District for three years	<p><b>DAY SHIFT</b></p> <p>One Armed security, Grade D</p> <p>One unarmed security, Grade D</p> <p><b>NIGHT SHIFT</b></p> <p>One Armed security, Grade D</p> <p>One Unarmed security , Grade D</p>
EDET 200/16	Physical security services at Makapan 's Valley World Heritage site Capricorn District for three years	<p>DAY SHIFT</p> <p>Two Armed security, Grade D</p> <p>NIGHT SHIFT</p> <p>Two Armed security, Grade D</p>
EDET 201/16	Physical security services at Environmental Affairs Corner Dorp and Suid Street for three years	<p>DAY SHIFT</p> <p>Two Armed security, Grade D</p> <p>Three Unarmed security, Grade D</p> <p>NIGHT SHIFT</p> <p>Two Armed security, Grade D</p> <p>Three Unarmed security, Grade D</p>

EDET 202/16	Physical security services at 16 Biccard Street Polokwane for three years	<p><b>DAY SHIFT</b></p> <p><b>One Armed security, Grade D</b></p> <p><b>One unarmed security, Grade D</b></p> <p><b>NIGHT SHIFT</b></p> <p><b>One Armed security, Grade D</b></p> <p><b>One Unarmed security , Grade D</b></p>
EDET 203/16	Physical security services at Klasserie Service Centre for three years	<p><b>DAY SHIFT</b></p> <p><b>Two Armed security, Grade D</b></p>

		<b>Two Unarmed security, Grade D</b>  <b>NIGHT SHIFT</b>  <b>Two Armed security, Grade D</b> <b>Two Unarmed security, Grade D</b>
EDET 204/16	Physical security services at Gani House for three years	<b>DAY SHIFT</b>  <b>One Armed security, Grade D</b> <b>Three Unarmed security, Grade D</b>  <b>NIGHT SHIFT</b>  <b>One Armed security, Grade D</b> <b>Two Unarmed security, Grade D</b>

**4.2 (SCM Advice Centers): LIMPOPO PROVINCIAL TREASURY  
ADVERTISEMENTS OF LIMPOPO CSD CALL CENTRE LINES FOR SUPPLIERS IN THE TENDER BULLETIN:-**

**LIMPOPO CSD CALL CENTRE LINES FOR SUPPLIERS**

DISTRICT	CALL CENTRE NUMBER	OFFICIAL RESPONSIBLE	TIME
Capricorn	015 291 8737	Mr Holeni TI	7H30 TO 16H30
Mopani	015 812 0256	Ms Nxumalo P	7H30 TO 16H30
Sekhukhune	013 265 1071	Mrs Morena MM	7H30 TO 16H30
Vhembe	015 962 0014	Mrs Nefolovhodwe Q	7H30 TO 16H30
Waterberg	014 717 1376	Mrs Tsatsi AT	7H30 TO 16H30

**4.3 ADVERTISEMENT OF CENTRAL SUPPLIER DATABASE ROADSHOW:  
CAPRICORN SUPPLY CHAIN MANAGEMENT ADVICE CENTRE ( LIMPOPO PROVINCIAL TREASURY)**

**(Centralised Supplier Database Roadshow program)**

DATE	MUNICIPALITY	VENUE	TARGET	TIME
22/09/2016	Blouberg	Blouberg Municipality	SUPPLIERS	10H00

For more information please contact Ms Masindi M M at Tel.015 2918424

**VHEMBE SUPPLY CHAIN MANAGEMENT ADVICE CENTRE**

**(Centralised Supplier Database Roadshow program)**

DATE	MUNICIPALITY	VENUE	TARGET	TIME
29/09/2016	Musina	Musina Municipality	SUPPLIERS	10H00

For more information please contact Ms Budeli A at Tel.015 9621752



#### 4.4 ERRATUM

**DEPARTMENT OF EDUCATION:**

**BID NUMBER: EDDP 740 DELIVERY AND INSTALLATION OF ACCESS CONTROL AND CCV SYSTEM**

- The bid will have compulsory briefing session will be held on the as follows:

**Date** : 2016/09/15

**Time** : 10H00

**Venue** : Department of Education: 113 Biccard Street Main Gate

**Contact person:** Mr. R Mushweu @ Tel No: 015 290 7781

#### 4.5. LISTOF AWARDED BIDS

##### 4.5.1. NOTICE OF TENDERS AWARDED BY GAAL TO SERVICE PROVIDERS: GATEWAY AIRPORT AUTHPRITY LIMITED

Below is a list of tenders awarded to Service Providers

Bid Number	Bid Description	Awarded Bidder	Amount	Total points attained	Date awarded
GAAL/028/2016/2017	Provision of Facility Management Services for a period of 3 years at Gateway Airports Authority Limited	Mekan Engineering Services	R14 160 409 .67	100	4 July 2016
GAAL/031/2016/2017	Pay parking system to be supplied, installed and commissioned at Gateway Airports Authority Limited	ACTEK PROCESS CONTROL TECHNOLOGIES JV Tlholo Projects (PTY)Ltd	R813 440.99	100	16 August 2016
GAAL/033/2016/2017	Refurbishment of Administration, old terminal, new terminal, conference centre and new car rental home at Gateway Airports Authority Limited	Xazulula Renovations and Constructions	R4 975 660.19	65.39	16 August 2016

**4.5.2. PROGRESS FOR AWARDED BIDS( SUCCESSFU BIDDERS): DEPARTMENT OF EDUCATION**

<b>BID NO.</b>	<b>DESCRIPTION</b>	<b>AWARDED BIDDER</b>	<b>AMOUNT</b>	<b>TOTAL POINTS ATTAINED</b>	<b>DATE AWARDED</b>
EDDP 724	Bid for the provision of scholar transport Capricorn	Samema Tours	As per approved pricing schedule	100	31/05/2016
EDDP 724	Bid for the provision of scholar transport Capricorn	Moreku Tranding enterprise (PTY) ltd	As per approved pricing schedule	98	31/05/2016
EDDP 724	Bid for the provision of scholar transport Capricorn	Asivhanga Transport Services	As per approved pricing schedule	100	31/05/2016
EDDP 724	Bid for the provision of scholar transport Capricorn	Hlako Mohafe Luxury Tours	As per approved pricing schedule	98	31/05/2016
EDDP 724	Bid for the provision of scholar transport Capricorn	Mmabi Transport cc	As per approved pricing schedule	98	31/05/2016
EDDP 724	Bid for the provision of scholar transport Capricorn	Qalisizwe Holdings	As per approved pricing schedule	98	31/05/2016
EDDP 724	Bid for the provision of scholar transport Capricorn	Makhayedwa Trading Enterprise cc	As per approved pricing schedule	100	31/05/2016
EDDP 724	Bid for the provision of scholar transport Capricorn	Ditlou Limas Trading Enterprise	As per approved pricing schedule	98	31/05/2016
EDDP 724	Bid for the provision of scholar transport Capricorn	Hlako Mohafe Luxury Tours	As per approved pricing schedule	98	31/05/2016
EDDP 724	Bid for the provision of scholar transport Capricorn	Malefo Transpotation	As per approved pricing schedule	98	31/05/2016
EDDP 724	Bid for the provision of scholar transport Capricorn	Season Star Trading 96	As per approved pricing schedule	100	31/05/2016
EDDP 724	Bid for the provision of scholar transport Capricorn	Phosh Tours	As per approved pricing schedule	100	31/05/2016
EDDP 724	Bid for the provision of scholar transport Capricorn	Ngatha Transport and General Projects	As per approved pricing schedule	98	31/05/2016
EDDP 724	Bid for the provision of scholar transport Capricorn	Tansnat Coachlines (PTY) LTD	As per approved pricing schedule	98	31/05/2016
EDDP 724	Bid for the provision of scholar transport Capricorn	Power Rush Trading 151	As per approved pricing schedule	100	31/05/2016
EDDP 724	Bid for the provision of scholar transport	Empinet Investments	As per approved pricing schedule	100	31/05/2016

	Capricorn				
EDDP 724	Bid for the provision of scholar transport Capricorn	Boresela Trading	As per approved pricing schedule	97.41	31/05/2016
EDDP 724	Bid for the provision of scholar transport Capricorn	J N Mahlangu Transport	As per approved pricing schedule	98	31/05/2016
EDDP 724	Bid for the provision of scholar transport Capricorn	Waiking Stick Transport	As per approved pricing schedule	100	31/05/2016
EDDP 724	Bid for the provision of scholar transport Capricorn	Mosia's Transport Road & Development	As per approved pricing schedule	98	31/05/2016
EDDP 724	Bid for the provision of scholar transport Capricorn	Dira Tiro Trading	As per approved pricing schedule	100	31/05/2016
EDDP 724	Bid for the provision of scholar transport Capricorn	Richard Hammond Media Group (PTY) LTD	As per approved pricing schedule	100	31/05/2016
EDDP 724	Bid for the provision of scholar transport Capricorn	NCH Transport (PTY) LTD	As per approved pricing schedule	98	31/05/2016
EDDP 724	Bid for the provision of scholar transport Capricorn	Ramokone Le Barwedi Trading and Project	As per approved pricing schedule	100	31/05/2016
EDDP 725	Bid for the provision of scholar transport Mopani	Mathole Bus Services	As per approved pricing schedule	98	31/05/2016
EDDP 725	Bid for the provision of scholar transport Mopani	Ntiyiso Transport Business Enterprise	As per approved pricing schedule	100	31/05/2016
EDDP 725	Bid for the provision of scholar transport Mopani	Conmi (PTY) LTD	As per approved pricing schedule	100	31/05/2016
EDDP 725	Bid for the provision of scholar transport Mopani	Asivhanga Transport Services	As per approved pricing schedule	100	31/05/2016
EDDP 725	Bid for the provision of scholar transport Mopani	Nwa Brapat Logistics Project Management (PTY) LTD	As per approved pricing schedule	100	31/05/2016
EDDP 725	Bid for the provision of scholar transport Mopani	Boikano Ditheto Business & Projects (PTY) LTD	As per approved pricing schedule	98	31/05/2016
EDDP 725	Bid for the provision of scholar transport Mopani	MRC Transport & Tours Services	As per approved pricing schedule	98	31/05/2016
EDDP 725	Bid for the provision of scholar transport Mopani	Mbangwa Howard Trading & Projects	As per approved pricing schedule	100	31/05/2016
EDDP 725	Bid for the provision of scholar transport Mopani	Kgashane Travel & Touring	As per approved pricing schedule	100	31/05/2016
EDDP 725	Bid for the provision of scholar transport Mopani	Norman Luxury Tours	As per approved pricing schedule	100	31/05/2016
EDDP 725	Bid for the provision of scholar transport Mopani	PJ Twalas Luxury Tours	As per approved pricing schedule	98	31/05/2016
EDDP 726	Bid for the provision of scholar transport Sekhukhune	Zaitours Transport and Towing (PTY) LTD	As per approved pricing schedule	98	31/05/2016
EDDP 726	Bid for the provision of scholar transport Sekhukhune	Khwekhwela Trading (PTY) Ltd	As per approved pricing schedule	100	31/05/2016

EDDP 726	Bid for the provision of scholar transport Sekhukhune	Season's Star Trading 96	As per approved pricing schedule	99.80	31/05/2016
EDDP 726	Bid for the provision of scholar transport Sekhukhune	Ziphelele Trading & Projects (PTY) LTD	As per approved pricing schedule	100	31/05/2016
EDDP 726	Bid for the provision of scholar transport Sekhukhune	Mokgapu Construction and Projects	As per approved pricing schedule	100	31/05/2016
EDDP 726	Bid for the provision of scholar transport Sekhukhune	Phuti Bakone Health Care (PTY) LTD		100	31/05/2016
EDDP 726	Bid for the provision of scholar transport Sekhukhune	S Mahlangu Transport and Projects	As per approved pricing schedule	100	31/05/2016
EDDP 726	Bid for the provision of scholar transport Sekhukhune	JMN Transport Services	As per approved pricing schedule	100	31/05/2016
EDDP 726	Bid for the provision of scholar transport Sekhukhune	Conmi Trading Enterprise (PTY) LTD	As per approved pricing schedule	100	31/05/2016
EDDP 726	Bid for the provision of scholar transport Sekhukhune	Phetha Trading Enterprise cc	As per approved pricing schedule	39.88	31/05/2016
EDDP 726	Bid for the provision of scholar transport Sekhukhune	B Harris and Sons	As per approved pricing schedule	98	31/05/2016
EDDP 726	Bid for the provision of scholar transport Sekhukhune	Icedudu Construction and Projects	As per approved pricing schedule	98	31/05/2016
EDDP 726	Bid for the provision of scholar transport Sekhukhune	Matshie Construction Transport Services	As per approved pricing schedule	100	31/05/2016
EDDP 726	Bid for the provision of scholar transport Sekhukhune	Mbuduma Weststar	As per approved pricing schedule	100	31/05/2016
EDDP 726	Bid for the provision of scholar transport Sekhukhune	Zaloe Trading Enterprise	As per approved pricing schedule	98	31/05/2016
EDDP 726	Bid for the provision of scholar transport Sekhukhune	Selahle Tours	As per approved pricing schedule	74.85	31/05/2016
EDDP 726	Bid for the provision of scholar transport Sekhukhune	Power Rush Trading 157	As per approved pricing schedule	100	31/05/2016
EDDP 726	Bid for the provision of scholar transport Sekhukhune	JPS Tours	As per approved pricing schedule	43.61	31/05/2016
EDDP 726	Bid for the provision of scholar transport Sekhukhune	Mahlangu Bus	As per approved pricing schedule	100	31/05/2016
EDDP 726	Bid for the provision of scholar transport Sekhukhune	Dlulabaphi Trading and Projects (PTY) LTD	As per approved pricing schedule	100	31/05/2016
EDDP 726	Bid for the provision of scholar transport	Mumbo Omhlophe Transport	As per approved pricing schedule	98	31/05/2016

	Sekhukhune				
EDDP 726	Bid for the provision of scholar transport Sekhukhune	Ditlou Kopanang General Construction	As per approved pricing schedule	98	31/05/2016
EDDP 726	Bid for the provision of scholar transport Sekhukhune	Ditlou Limas Trading and Projects	As per approved pricing schedule	98	31/05/2016
EDDP 726	Bid for the provision of scholar transport Sekhukhune	A N Yende Transport and Trading	As per approved pricing schedule	97.95	31/05/2016
EDDP 726	Bid for the provision of scholar transport Sekhukhune	Segweka Trading Enterprise	As per approved pricing schedule	98	31/05/2016
EDDP 726	Bid for the provision of scholar transport Sekhukhune	Khanyisa Sbani Projects	As per approved pricing schedule	100	31/05/2016
EDDP 726	Bid for the provision of scholar transport Sekhukhune	MW Dima Transport	As per approved pricing schedule	98	31/05/2016
EDDP 727	Bid for the provision of scholar transport Vhembe	Mathole Bus Service	As per approved pricing schedule	98	31/05/2016
EDDP 727	Bid for the provision of scholar transport Vhembe	SC Moshole Transport and Projects (PTY) LTD	As per approved pricing schedule	100	31/05/2016
EDDP 727	Bid for the provision of scholar transport Vhembe	New-look Khalanga Trading and Projects (PTY) LTD	As per approved pricing schedule	98	31/05/2016
EDDP 727	Bid for the provision of scholar transport Vhembe	Cydrick's Transport Road Civil and Building Construction	As per approved pricing schedule	98	31/05/2016
EDDP 727	Bid for the provision of scholar transport Vhembe	Do Light Transport (PTY) LTD	As per approved pricing schedule	100	31/05/2016
EDDP 727	Bid for the provision of scholar transport Vhembe	Mmamokoena Transport and Trading	As per approved pricing schedule	100	31/05/2016
EDDP 727	Bid for the provision of scholar transport Vhembe	Rambuda Transport and Trading	As per approved pricing schedule	98	31/05/2016
EDDP 727	Bid for the provision of scholar transport Vhembe	Mmutlana Construction & Transport cc	As per approved pricing schedule	98	31/05/2016
EDDP 727	Bid for the provision of scholar transport Vhembe	Talifhani Tradinh	As per approved pricing schedule	100	31/05/2016
EDDP 727	Bid for the provision of scholar transport Vhembe	Norman Luxury Tours	As per approved pricing schedule	100	31/05/2016
EDDP 727	Bid for the provision of scholar transport Vhembe	Re Ma Africa Trading	As per approved pricing schedule	100	31/05/2016
EDDP 727	Bid for the provision of scholar transport Vhembe	Razwima Trading and Projects (PTY) LTD	As per approved pricing schedule	98	31/05/2016

EDDP 728	Bid for the provision of scholar transport Vhembe	Shilas Business Enterprise	As per approved pricing schedule	100	31/05/2016
EDDP 728	Bid for the provision of scholar transport Vhembe	B A Mahlangu General Construction and Projects	As per approved pricing schedule	81.13	31/05/2016
EDDP 728	Bid for the provision of scholar transport Vhembe	Vuki Chuene Tourism	As per approved pricing schedule	100	31/05/2016
EDDP 728	Bid for the provision of scholar transport Vhembe	Rebamedi Services	As per approved pricing schedule	100	31/05/2016
EDDP 728	Bid for the provision of scholar transport Vhembe	LL Mathe Transport	As per approved pricing schedule	98	31/05/2016
EDDP 728	Bid for the provision of scholar transport Vhembe	Angel of Fire Trading & projects	As per approved pricing schedule	100	31/05/2016
EDDP 728	Bid for the provision of scholar transport Vhembe	IMS Bus Services cc	As per approved pricing schedule	100	31/05/2016
EDDP 728	Bid for the provision of scholar transport Vhembe	B Harris and Sons cc	As per approved pricing schedule	98	31/05/2016
EDDP 728	Bid for the provision of scholar transport Vhembe	Kwena Madiba Luxury Tours (PTY) LTD	As per approved pricing schedule	100	31/05/2016
EDDP 728	Bid for the provision of scholar transport Vhembe	Khanyisa Sbani Projects	As per approved pricing schedule	100	31/05/2016
EDDP 728	Bid for the provision of scholar transport Vhembe	Maru A Maso Transport Services cc	As per approved pricing schedule	98	31/05/2016
EDDP 728	Bid for the provision of scholar transport Vhembe	Asihambeni Trading and Projects	As per approved pricing schedule	98	31/05/2016
EDDP 728	Bid for the provision of scholar transport Vhembe	Moreku Trading Enterprise (PTY) LTD	As per approved pricing schedule	98	31/05/2016
EDDP 728	Bid for the provision of scholar transport Vhembe	Ditlou Kopanang General Construction	As per approved pricing schedule	98	31/05/2016
EDDP 728	Bid for the provision of scholar transport Vhembe	Tsogang Trading	As per approved pricing schedule	72.74	31/05/2016
EDDP 728	Bid for the provision of scholar transport Vhembe	Mdibani Transport	As per approved pricing schedule	98	31/05/2016
EDDP 728	Bid for the provision of scholar transport Vhembe	Paballo Works (PTY) LTD	As per approved pricing schedule	100	31/05/2016
EDDP 728	Bid for the provision of scholar transport Vhembe	Maduludi cc	As per approved pricing schedule	99	31/05/2016
EDDP 728	Bid for the provision of scholar transport	Mabushe Transport	As per approved pricing schedule	98	31/05/2016

	Vhembe				
EDDP 728	Bid for the provision of scholar transport Vhembe	Herman TBZ Transport and Tours	As per approved pricing schedule	91.81	31/05/2016
EDDP 728	Bid for the provision of scholar transport Vhembe	Dikos Tsa Kgabo (PTY) LTD	As per approved pricing schedule	100	31/05/2016
EDDP 728	Bid for the provision of scholar transport Vhembe	Maela Distributors and Projects	As per approved pricing schedule	98	31/05/2016
EDDP 728	Bid for the provision of scholar transport Vhembe	Seqa Indedema Trading And Projects	As per approved pricing schedule	98	31/05/2016
EDDP 728	Bid for the provision of scholar transport Vhembe	Goodsanele Trading Enterprise	As per approved pricing schedule	98	31/05/2016
EDDP 728	Bid for the provision of scholar transport Vhembe	Sijaga Trading Enterprise	As per approved pricing schedule	98	31/05/2016

NB: Bidders who do not comply with the above mandatory requirements will automatically be disqualified.

**PHASE 2**

- Bidders will be evaluated on the basis of price and preferential points as follows:
- Price : 90
- BBBEE : 10

**SPECIFIC CONDITION OF TENDER**

**BRIEFING SESSION**

There will be a **COMPULSORY BRIEFING SESSION** arranged as follows:

VENUE	DATE	TIME
Mastec, Seshego	Wednesday, 27 <sup>th</sup> of January 2016	10h30

**PRICE**

	MINIBUS	MIDBUS	BUS
BAND	9 -13 SEATER	19 -35 SEATER	36 -65 SEATER
0 - 20 KM	37.35	64.09	99.55
21- 30 KM	25.96	44.35	69.57
31- 40 KM	20.27	34.50	54.59
41 -50 KM	16.66	28.57	45.63
51 – KM & ABOVE	16.66	28.57	45.60

- Bid price must cost in RSA currency and VAT INCLUDED
- Bidders are expected to quote per route
- Bidders must quote per attached schedule

**MONITORING**

- The Department has the right to determine the monitoring programme and compliance of the service providers at school.
- Bidder must be on time at pick-up point and at schools.

**PAYMENT**

- On a Monthly basis, the service providers must submit invoices duly signed by school principal, circuit, district offices and stamped on or before the 1<sup>st</sup> of each month.



#### 4. 6 BID INVITATIONS CANCELLED

##### DEPARTMENT OF EDUCATION: BID NO EDDP737

EDDP NUMBER	DESCRIPTION	REASON FOR CANCELLATION
EDDP737	Supply, delivery and installation of interactive white board	Changes in specification

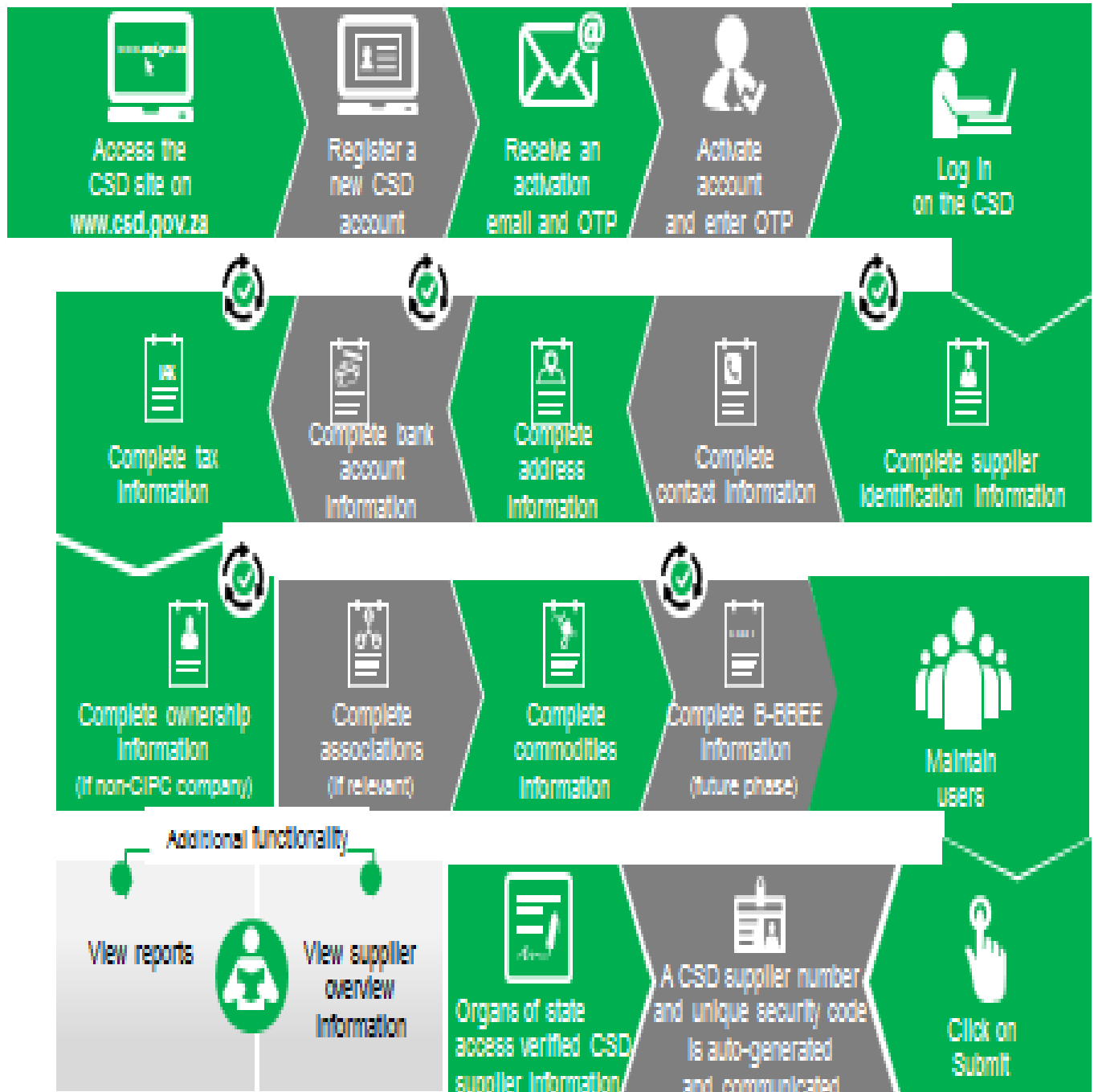
NB: ENQ: MUSHWEU R @ TEL NO: 015 290 7781

#### 4. 7 ADENDUM

##### ADVERTISED SECURITY TENDERS: VHEMBE TVET COLLEGE

1. Kindly note that closing date for the submission of Tender Documents is **14 September 2016 at 11H00** and not **05 September 2016** as it appeared in the Tender Bulletin.
2. Also be informed that even those who did not attend briefing sessions are afforded an opportunity to buy Tender Documents and compete with others provided they would have submitted their bids before closing date and time as indicated in the Tender Document
  - Tender VTVET No 33/2016, Makwarela campus
  - Tender VTVET No 34/2016, Mavhoi Campus
  - Tender VTVET No 35/2016, Mashamba Campus
  - Tender VTVET No 36/2016, Thengwe campus
  - Tender VTVET No 37/2016, Central Office
  - Tender VTVET No 38/2016, Tshisimani Campus

# Supplier Self-Registration Process



Auto verification of supplier information with SARS, CIPC etc

**ANNEXURE 1: ADDRESS LIST AND CONTACT DETAILS: LIMPOPO PROVINCIAL DEPARTMENTS**

UNIQUE REF. NO.	BID DOCUMENT REFERENCE	CONTACT DETAILS	DOCUMENTS SOLD AT:	DOCUMENTS DEPOSITED AT
100	DSDP	Tel: 015 293 6000 Fax: 015 293 6211 Website: <a href="http://www.limpopo.gov.za">www.limpopo.gov.za</a>	<b>Department of Social Development</b> , Office No. D3 Ground Floor, Old Capricorn Building, 18 College Street, POLOKWANE and all Provincial Treasury Tender Advice Centers	Deposited in the box located at Department of Health and Social Development, 18 College Street, Polokwane
101	LPT	Tel: 015 298 7000 Fax: 015 295 7010 Website: <a href="http://www.limpopo.gov.za">www.limpopo.gov.za</a>	<b>Provincial Treasury</b> 56 – 58 Paul Kruger Street, POLOKWANE and all Provincial Treasury Tender Advice Centers	Deposited in the bid box located outside a guard house at Ismini Towers, 46 Hans Van Rensburg Street, Polokwane
101A	TC/LP	Tel: 015 291 8400 Fax: 015 295 3310 Website: <a href="http://www.limpopo.gov.za">www.limpopo.gov.za</a>	<b>Provincial Treasury</b> 56 – 58 Paul Kruger Street, POLOKWANE and all Provincial Treasury Tender Advice Centers	Deposited in the bid box located in the main entrance, Finance House Building, 56-58 Paul Kruger Street, Polokwane
102	PRDP	Tel: 015 287 6000 Fax: 015 295 3840 Website: <a href="http://www.limpopo.gov.za">www.limpopo.gov.za</a>	<b>Office of the Premier</b> , 40 Hans van Rensburg Street, POLOKWANE and all SCM Advice Centers	Deposited in the bid box located at Mowaneng Building, 40 Hans van Rensburg Street, Polokwane
103	HEDP	Tel: 015 293 6000 Fax: 015 293 6211 Website: <a href="http://www.limpopo.gov.za">www.limpopo.gov.za</a>	<b>Department of Health</b> , Office No. D3 Ground Floor, Old Capricorn Building, 18 College Street, POLOKWANE and all Provincial Treasury Tender Advice Centers	Deposited in the box located at Department of Health and Social Development, 18 College Street, Polokwane
104	LPEDT	Tel: 015 290 7600/1 Fax: 015 297 4494 Website: <a href="http://www.limpopo.gov.za">www.limpopo.gov.za</a>	<b>Department of Education</b> , Corner 113 Biccard and 24 Excelsior Streets, POLOKWANE and all Provincial Treasury Tender Advice Centers	Deposited in the bid box located in the main entrance of corner 113 Biccard Street and Excelsior Street, Polokwane
105	PUDP	Tel: 015 295 1000 Fax: 015 295 1163 Website: <a href="http://www.limpopo.gov.za">www.limpopo.gov.za</a>	<b>Department of Roads &amp; Transport</b> , 40 Paul Kruger Street, POLOKWANE and all Provincial Treasury Tender Advice Centers	Deposited in the bid box located at Phamoko Building, 39 corner Church and Bodenstein Street, Polokwane
106	DSSL	Tel: 015 290 2900 Fax: 015 291 4452 Website: <a href="http://www.limpopo.gov.za">www.limpopo.gov.za</a>	<b>Department of Safety, Security and Liaison</b> , 32 Schoeman Street, POLOKWANE and all Provincial Treasury Tender Advice Centers	Deposited in the bid box located in the main entrance of 32 Schoeman Street, Polokwane
107	COGHSTA	Tel: 015 294 2000 Fax: 015 295 4190 Website: <a href="http://www.limpopo.gov.za">www.limpopo.gov.za</a>	<b>Department of Co-Operative Governance, Human Settlements &amp; Traditional Affairs</b> , 28 Market Street, Office No. G 74, Ground Floor, Polokwane.	Deposited in the bid box located at Hensa Towers, Cnr of Rabe and Landdros Mare Streets, Polokwane
108	DSAC	Tel: 015 284 4000 Fax: 015 284 4514 Website: <a href="http://www.limpopo.gov.za">www.limpopo.gov.za</a>	<b>Department of Sport, Arts and Culture</b> Olympic Towers, Corner Rabe and Biccard Street, POLOKWANE and all Provincial Treasury Tender Advice Centre	Deposited in the bid box located in the main entrance of Olympic Towers, Corner 21 Rabe and Biccard Street, Polokwane
109	LEDET	Tel: 015 293 8300 Fax: 015 293 8319 Website: <a href="http://www.limpopo.gov.za">www.limpopo.gov.za</a>	<b>Department of Economic Development, Environment &amp; Tourism</b> , 90 Bok Street, POLOKWANE and all SCM Advice Centers	Deposited in the bid box located at Evidiki Towers, 19 Biccard Street, Polokwane
110	LDPW & WODP	Tel: 015 284 7000 Fax: 015 284 7031 Website: <a href="http://www.limpopo.gov.za">www.limpopo.gov.za</a>	<b>Department of Public Works</b> , Works Towers, 43 Church Street, POLOKWANE and all Provincial Treasury Tender Advice Centers	Deposited in the bid box located at Corner Blaawberg and River Street Ladanna Polokwane 0699 Private Bag X9490 Polokwane 0700
111	ACDP	Tel: 015 294 3000/30/60/90/20 Fax: 015 294 4506 Website: <a href="http://www.limpopo.gov.za">www.limpopo.gov.za</a>	<b>Department of Agriculture</b> , Temo Towers, 69 Biccard Street, POLOKWANE and all Provincial Treasury Tender Advice Centers	Deposited in the bid box located in the main entrance of AgriVillage, 69 Biccard Street, Polokwane

**ANNEXURE 2: ADDRESS LIST AND CONTACT DETAILS: LIMPOPO PUBLIC ENTITIES**

UNIQUE REF. NO.	BID DOCUMENT REFERENCE	CONTACT DETAILS	DOCUMENTS SOLD AT:	DOCUMENTS DEPOSITED AT
112	RFB: LIMP	Tel: 015 293 3621 Fax: 015 293 3660 Website: <a href="http://www.golimpopo.co">www.golimpopo.co</a>	<b>State Information Technology Agency (SITA)</b> Limpopo Office, Moolman Building, 27 Market Street, POLOKWANE, 0699	Bid box located in the Main Entrance of Moolman Building, 27 Market Street, Polokwane
113	LTA	Tel: 015 293 3600 Fax: 015 293 3655 Website: <a href="http://www.golimpopo.com">www.golimpopo.com</a>	<b>Limpopo Tourism Agency</b> , ERF 92/688, Portion 2 Southern Gateway, Ext 4, N1 Main Road, Polokwane 0699	Bid box located in the offices ERF 92/688, Portion 2 Southern Gateway, Ext 4, N1 Main Road, Polokwane 0699
114	LGB	Tel: 015 295 5581 Fax: 015 295 3566 Website: <a href="http://www.lgb.org">www.lgb.org</a>	<b>Limpopo Gambling Board</b> , 08 Hans van Rensburg Street, POLOKWANE, 0700 from 08H30 to 16H00	Bid box located in the main entrance, ground floor, 08 Hans van Rensburg Street, Polokwane 0700
115	LEDA	Tel: 015 633 4700 Fax: 015 633 4854 Website: <a href="http://www.leda.co.za">www.leda.co.za</a>	<b>Limpopo Economic Development Agency</b> Enterprise Development Finance, Main Road, Lebowakgomo	Bid box located in the main entrance, Enterprise Development Finance, Main Road, Lebowakgomo
116	RAL	Tel: 015 284 4600 Fax: 015 284 4701 Website: <a href="http://www.ral.co.za">www.ral.co.za</a>	<b>Road Agency Limpopo (RAL)</b> , RAL Towers, 26 Rabe Street, POLOKWANE, 0700	Bid box located in the entrance foyer (ground floor) of RAL Towers, at 26 Rabe Street, Polokwane
117	GAAL	Tel: 015 288 0122 Fax: 015 288 0346 Website: <a href="http://www.gaal.co.za">www.gaal.co.za</a>	<b>Gateway Airports Authority Limited</b> , N1 Road to Louis Trichardt, Army Base, POLOKWANE International Airport, Polokwane, 0700	Bid box located in the main entrance, ground floor of administration building, Polokwane International Airport, Army Base
118	VIVET	Tel: 015 963 3156 Fax: 015 963 3154 Website: <a href="mailto:www.fetcol@mweb.co.za">www.fetcol@mweb.co.za</a>	<b>Vhembe FET College</b> , Stand No. 203, Unit A, Sibasa, 0970, Limpopo Province	Vhembe FET College, Central Office, Private Bag X2136, SIBASA 0970
119	WTVET	Tel: 015 491 8581 / 8602 Fax: 015 491 8579 Website: <a href="http://www.procurement@waterbergcollege.co.za">www.procurement@waterbergcollege.co.za</a>	<b>Waterberg FET College</b> , Central Office, 36 Hooge Street, Mokopane 0600	<b>Waterberg FET College</b> , Central Office, 36 Hooge Street, Mokopane Private Bag X 2449, Mokopane 0600

**ANNEXURE 3: ADDRESS LIST AND CONTACT DETAILS: PROVINCIAL TREASURY TENDER ADVICE CENTRES**

(Tender bulletins and bid documents are obtainable from the following Centers):

<b>PROVINCIAL TREASURY SUPPLY CHAIN MANAGEMENT ADVICE CENTRES</b>	
<p><b>HEAD OFFICE</b></p> <p>Provincial Supply Chain Management Office 56 &amp; 58 Paul Kruger Street POLOKWANE Private Bag x9494 <b>POLOKWANE, 0700</b> <b>Tel No. (015) 291 8400</b></p> <p>Contact: <b>Ms. M.B. Malope</b> @ Tel: 015 291 8717/6</p>	<p><b>Capricorn SCM Advice Centre</b></p> <p>Limpopo Provincial Treasury 56 &amp; 58 Paul Kruger Street Private Bag x9494 <b>POLOKWANE, 0700</b> <b>Tel No. (015) 291 8400</b></p> <p>Contact Person: <b>Ms. M.M. Masindi</b></p>
<p><b>Vhembe SCM Advice Centre</b></p> <p>Limpopo Provincial Treasury Government Building Complex Office No. E006 <b>THOHOYANDOU, VENDA</b> Tel: (015) 962 1752 Fax: (015) 962 1282</p> <p>Contact Person: <b>Ms. A. Budeli</b></p>	<p><b>Mopani SCM Advice Centre</b></p> <p>Limpopo Provincial Treasury Private Bag X 1973 <b>GIYANI, 0826</b> Tel: (015) 812 0149 Fax: 086 219 7905</p> <p>Contact Person: <b>Mr. M. B. Mbedzi</b></p>
<p><b>Waterberg SCM Advice Centre</b></p> <p>Limpopo Provincial Treasury 98 Nelson Mandela Street Decimale Building <b>MODIMOLLE</b> Tel: (014) 717 5837 Fax: (014) 717 5670</p> <p>Contact Person: <b>Mr. P.E. Mogoroga</b></p>	<p><b>Sekhukhune SCM Advice Centre</b></p> <p>Limpopo Provincial Treasury Lefa Centre, Schoonoord Road <b>JANE FURSE</b> Tel: (013) 265 1344 Fax: (013) 265 1354</p> <p>Contact Person: <b>Mr. M.S. Sehale</b></p>

#### ANNEXURE 4: ADDRESS LIST AND CONTACT DETAILS: SATELLITE OFFICES

(Tender bulletins are obtainable from the following centers)

CAPRICORN	VHEMBE	MOPANI	WATERBERG	SEKHUKHUNE
Lebowakgomo LIBSA	Dzanani Revenue Office Tel. No. (015) 970 4969	Namakgale Revenue Office Tel. No. (015) 761 3119	LIBSA Thabazimbi: No.08 Riet Bok Street Tel. No. (014) 772 2437	Tubatse LIBSA Tubatse Municipality Tel. No. (013) 231 8530
Seshego (Economic Dev. Offices Zone 8) Tel. No. (015) 223 7990	Malamulele Revenue Office Tel. No. (015) 871 0608	Ritavi DCO Tel. No. (015) 303 0455	LIBSA Lephalale No. 3A Venter Street Tel. No. (014) 763 2834	Fetakgomo LIBSA Fetakgomo Municipality Tel. No. (015) 622 8904
Ga-Thoka (Department of Economic Development)	Musina Revenue Office Tel. No. (015) 534 2713	Naphuno Magistrate Office Tel. No. (015) 355 4972	Bela-Bela Local Municipality (Bela-Bela) Tel. No. (014) 736 8000	Atok Thusong Service Centre Atok
Senoamadi Complex- Morebeng next to Taxi Rank-Economic Development Offices Contact Mr. Pheha @ 084 602 423	Mutale Revenue Office Tel. No. 072 252 7153	Lulekani Magistrate Offices Tel. No. (015) 783 0486	Mookgophong Local Municipality (Mookgopong) Tel. No. (014) 743 1111	Maatla-ke batho LIBSA Marblehall Tel. No. (013) 261 2642
Bochum: LIBSA	Soutpansberg Revenue Office Tel. No. (015) 516 0002	Economic Development Offices in Tzaneen 20b Peace Street, Cnr Peace and Hermanus Tel. No. (015) 307 1195	LIBSA Mokopane 90 Retief Street Tel. 015 491 8582 Fax: 015 491 8584	SEDA Groblersdal Tel. No. (013) 262 3651
Mathabatha Tribal Authority Ga-Mathabatha	Tshilwavhusiku Revenue Office (015) 571 5277	Bolobedu Revenue Office Tel. No. (015) 328 3377		
Mafefe Tribal Authority MAFEFE	Tshitale Revenue Office Tel. No. (015) 975 1717	Hlanganani Revenue Office operating within Khomani Tribal Authority at Majosi. Tel. No. 072 304 3916		
	Vuwani- Revenue Office Tel. No. 072 058 1910			